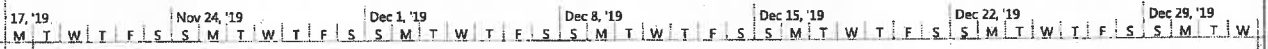
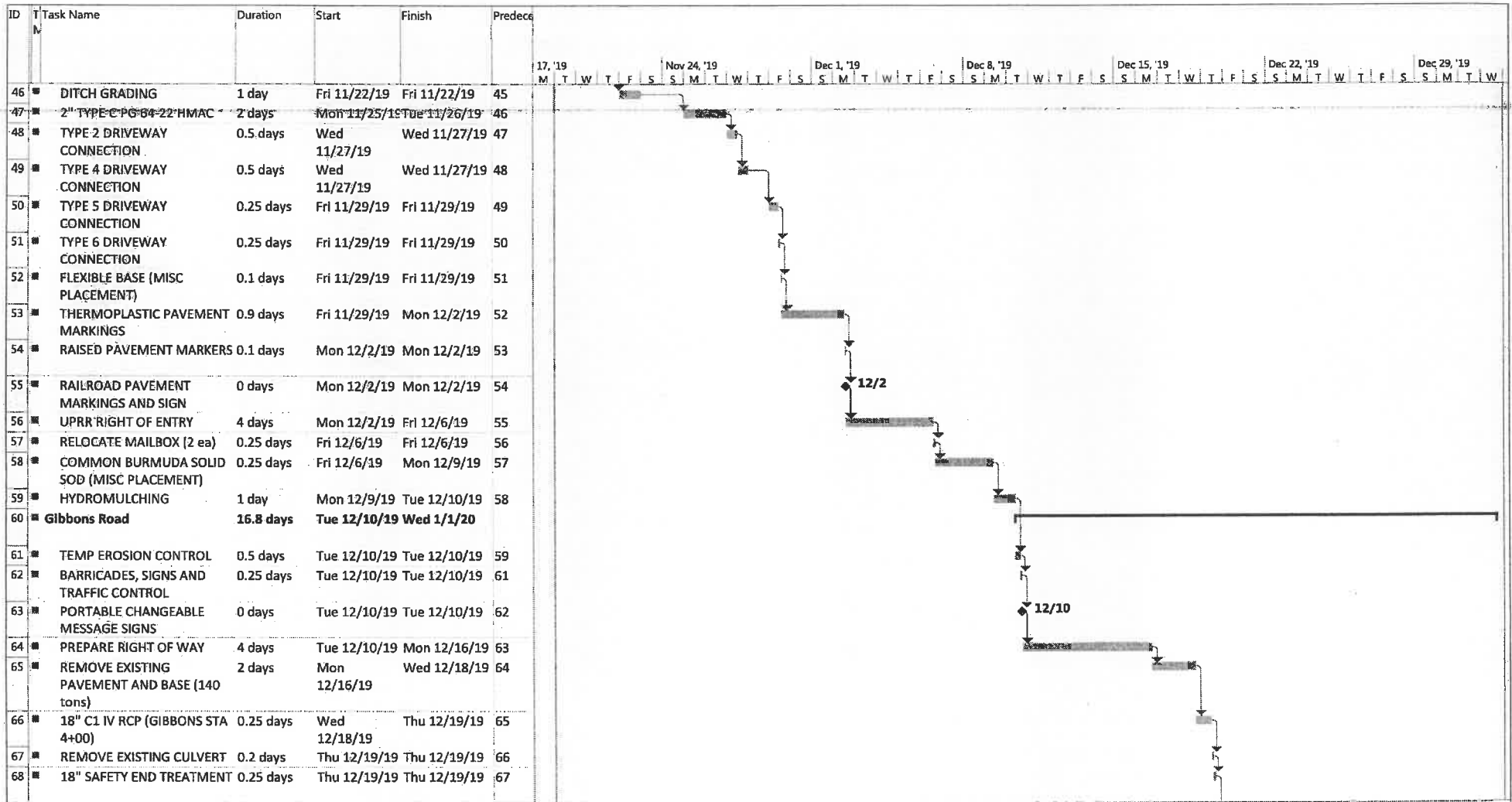


ID	Task Name	Duration	Start	Finish	Predecessor
1	Mobilization	6 days	Wed 8/21/19	Wed 8/28/19	
2	Sam Davis Road	46.65 days	Tue 8/13/19	Thu 10/17/19	
3	TEMP EROSION CONTROL	0.5 days	Wed 8/21/19	Wed 8/21/19	
4	BARRICADES, SIGNS AND TRAFFIC CONTROL	0 days	Wed 8/21/19	Wed 8/21/19	3
5	PREPARE RIGHT OF WAY	5 days	Tue 8/13/19	Tue 8/20/19	4
6	REMOVE EXISTING CULVERT (alternate)	0.4 days	Wed 8/21/19	Wed 8/21/19	5
7	18" C1 IV RCP (SAM DAVIS STA 32+00) (alternate)	0.75 days	Wed 8/21/19	Thu 8/22/19	6
8	REMOVE EXISTING CULVERT (alternate at 74+75)	0.2 days	Thu 8/22/19	Thu 8/22/19	7
9	18" C1 IV RCP (SAM DAVIS STA 74+75) (alternate)	0.5 days	Thu 8/22/19	Thu 8/22/19	8
10	18" SAFETY END TREATMENT (alternate)	0.25 days	Thu 8/22/19	Fri 8/23/19	9
11	REMOVE EXISTING PAVEMENT AND BASE (56 loads)	1 day	Thu 9/12/19	Thu 9/12/19	10
12	2" MILLING (approx 50 tons)	0 days	Thu 9/12/19	Thu 9/12/19	11
13	REPAIR SUBGRADE (AS DIRECTED)	0.3 days	Fri 9/13/19	Fri 9/13/19	12
14	SPOT REPAIRS (approx 130 tons)	5 days	Wed 9/25/19	Tue 10/1/19	13
15	PULVAMIX AND CEMENT TREAT BASE	3 days	Wed 9/18/19	Fri 9/20/19	
16	PORTLAND CEMENT @ 4% (20LB/SY)	0 days	Fri 9/20/19	Fri 9/20/19	15
17	2" TYPE C PG 64-22 HMAC (1715 tons)	2 days	Mon 10/7/19	Tue 10/8/19	16
18	TYPE 2 DRIVEWAY CONNECTION	1 day	Wed 10/9/19	Wed 10/9/19	17
19	TYPE 4 DRIVEWAY CONNECTION	0.5 days	Wed 10/9/19	Wed 10/9/19	17
20	TYPE 5 DRIVEWAY CONNECTION	0.5 days	Wed 10/9/19	Wed 10/9/19	17
21	FLEXBASE FOR (MISC PLACEMENT)	0.1 days	Thu 10/10/19	Thu 10/10/19	18



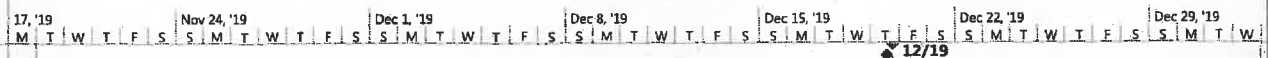
Project: Schedule as of 11-19-2
Date: Tue 11/19/19

Task		Project Summary		Manual Task		Start-only		Deadline	
Split		Inactive Task		Duration-only		Finish-only		Progress	
Milestone		Inactive Milestone		Manual Summary Rollup		External Tasks		Manual Progress	
Summary		Inactive Summary		Manual Summary		External Milestone			



Project: Schedule as of 11-19-2 Date: Tue 11/19/19	Task		Project Summary		Manual Task		Start-only		Deadline	
	Split		Inactive Task		Duration-only		Finish-only		Progress	
	Milestone		Inactive Milestone		Manual Summary Rollup		External Tasks		Manual Progress	
	Summary		Inactive Summary		Manual Summary		External Milestone			

ID	Task Name	Duration	Start	Finish	Predecessor
69	REPAIR SUBGRADE (AS DIRECTED)	0 days	Thu 12/19/19	Thu 12/19/19	68
70	SPOT REPAIRS (52 tons)	2 days	Thu 12/19/19	Mon 12/23/19	69
71	PULVAMIX AND CEMENT TREAT BASE	2 days	Mon 12/23/19	Wed 12/25/19	70
72	PORTLAND CEMENT @ 4% (20LB/SY)	0 days	Wed 12/25/19	Wed 12/25/19	71
73	3" MILLING	1 day	Wed 12/25/19	Thu 12/26/19	72
74	2" TYPE C PG 64-22 HMAC (500 tons)	1 day	Thu 12/26/19	Fri 12/27/19	73
75	TYPE 2 DRIVEWAY CONNECTION	1 day	Fri 12/27/19	Mon 12/30/19	74
76	TYPE 4 DRIVEWAY CONNECTION	0.25 days	Mon 12/30/19	Mon 12/30/19	75
77	TYPE 5 DRIVEWAY CONNECTION	0.25 days	Mon 12/30/19	Tue 12/31/19	76
78	TYPE 6 DRIVEWAY CONNECTION	0.25 days	Tue 12/31/19	Tue 12/31/19	77
79	FLEXIBLE BASE (MISC PLACEMENT)	0.1 days	Tue 12/31/19	Tue 12/31/19	78
80	OBJECT MARKER	0 days	Tue 12/31/19	Tue 12/31/19	79
81	RELOCATE MAILBOX	0.3 days	Tue 12/31/19	Tue 12/31/19	80
82	COMMON BURMUDA SOLID SOD	0.1 days	Tue 12/31/19	Tue 12/31/19	81
83	COMMON BURMUDA SOLID SOD (MISC PLACEMENT)	0.1 days	Tue 12/31/19	Tue 12/31/19	82
84	HYDROMULCHING	1 day	Tue 12/31/19	Wed 1/1/20	83



Project: Schedule as of 11-19-2 Date: Tue 11/19/19	Task	Project Summary	Manual Task	Start-only	Deadline
	Split	Inactive Task	Duration-only	Finish-only	Progress
	Milestone	Inactive Milestone	Manual Summary Rollup	External Tasks	Manual Progress
	Summary	Inactive Summary	Manual Summary	External Milestone	